



INDIAN SCHOOL AL WADI AL KABIR

DEPARTMENT OF EVS [2022 – 2023]

LESSON: OUR LIKES AND DISLIKES

WORKSHEET

RESOURCE PERSON: MS.SUDHA PANKAJ

NAME: _____ CLASS: V SEC: _____ DATE: _____

I. Answer the following in one word.

a. It is the director of your body which controls and regulates every action performed by your body. What is it?

b. What is the approximate weight of a typical human brain?

c. Which part of the brain controls involuntary actions like coughing and sneezing?

II. Identify the term which corresponds to each given description.

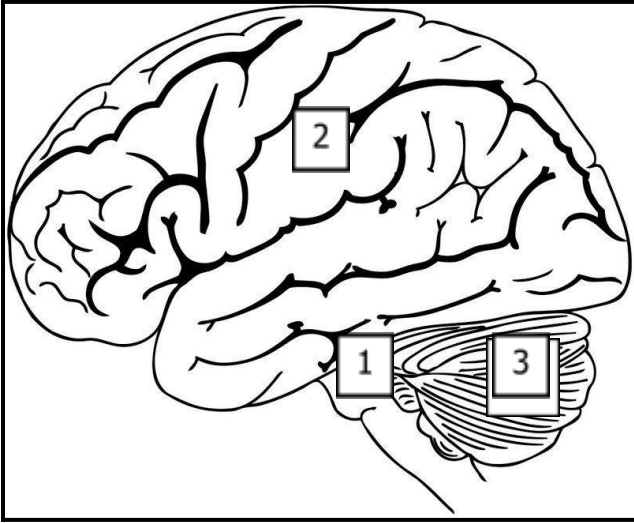
Function/Description	Term
It is the network of cells, tissues and organs that controls thoughts and movements.	
It is incharge of important functions in our body, such as heartbeat and breathing.	
It is the largest part of the brain. It is divided into sections called lobes.	
They are specialized cells of the nervous system, incharge of transmitting messages.	
It connects the brain to the nerves that are found throughout the body.	
It controls the movements of your muscles and gives you balance.	
It is something which results as a response from your body.	

III. Differentiate between the following.

Sensory Nerves	Motor Nerves

Voluntary Actions	Involuntary Actions

IV. Look at the given diagram of a human brain. Answer the questions given alongside. Color the given image.



1. This part of the human brain connects the spinal cord to the brain. It controls involuntary actions like respiration, digestion, blood circulation etc.

2. It is the biggest part of the brain. It controls voluntary actions such as vision, movement, speech, touch, learning and emotions.

3. Which part of the brain helps us to maintain balance?

V. Select the correct answer to these questions from the codes (i), (ii), (iii) and (iv) as given below.

i) Both A and R are true and R is the correct explanation of the assertion.

ii) Both A and R are true but R is not the correct explanation of the assertion.

iii) A is true but R is false.

iv) A is false but R is true.

1) **Assertion:** Braille is a script that involves letters, numbers, punctuation marks and symbols of raised dots on stiff paper.

Reason: Blind people use Braille to read and write.

2) **Assertion:** We use our sense organs to get information about our surroundings.

Reason: The spinal cord is a bunch of nerves that connect the brain with the rest of the body.

V. Shanaya and Suhana are best friends. Shanaya is fond of playing Basketball but Suhana enjoys classical dance and music. Name the factors that influence their likes and dislikes.

